



# MONOMATERIAL. **NOW.**

Recyclable monomaterial pouches with our spouts made from LowSealing materials and post-consumer recycles.

**WE. CREATE. FUTURE.**

## FUTURE-ORIENTED MONOMATERIAL POUCHES.

Flexible packaging is lightweight, space-saving, and requires minimal material usage. Its flexible shape adapts optimally to the contents, enabling efficient storage and transportation logistics. As a result, stand-up pouches are increasingly replacing existing packaging for pet food, baby food, cleaning and laundry detergents, personal care products, and dairy products.

Our spouts and caps are characterized by high machine compatibility, a wide variety of colors and materials, and a range of different opening diameters – available in assembled form if needed.

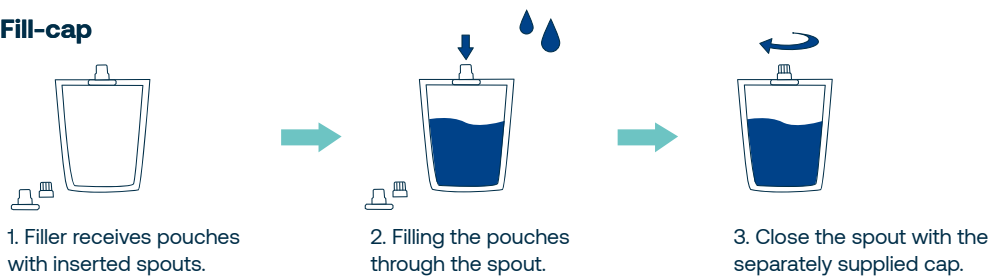
## SPOUTS FOR ALL FILLING SYSTEMS.

Whether filling through the top seam of the pouch (fill-seal) or filling through the already sealed spout (fill-cap), we have the solution for your application.






### Fill-Seal



### Fill-cap



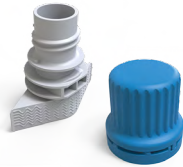
## YOUR BENEFITS:

-  Patented wave structure as a welding base that is gentle on the film.
-  Solutions for every filling system: filling through the top seam and the spout.
-  Spouts for low temperature sealing processes and ultrasonic welding.
-  LowSealing materials for recyclable monomaterial pouches.
-  The add-on: use of post-consumer recyclates (PCR) to reduce greenhouse gas emissions.

## OUR SPOUTS AND CAPS.

### Serial AE 001 – Ø 10.5 mm

Fill-Cap



Fill-Seal



### Serial AE 002 – Ø 12.5 mm

Fill-Cap

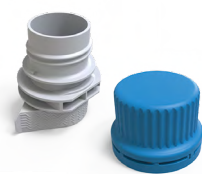


Fill-Seal



### Serial AE 003 – Ø 17.5 mm

Fill-Cap

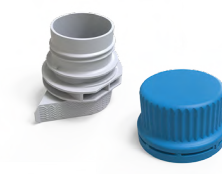


Fill-Seal



### Serial AE 004 – Ø 21.5 mm

Fill-Cap

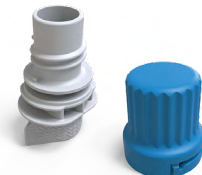


Fill-Seal



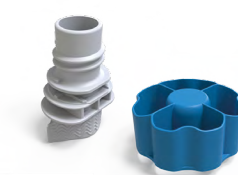
### Serial AE 005 – Ø 8.5 mm

Fill-Cap



### Serial AE 007 – Ø 8.5 mm

Fill-Cap



All information about our spouts can be found here



## FOR MORE RESOURCE CONSERVATION.

Environmental and climate protection are becoming increasingly important for consumers. Therefore, we see ourselves as plastic processors with the responsibility to design products and processes in the most environmentally friendly way possible. Our goal is for the plastic in our packaging to come directly from the Yellow Bag and to end up there again. This closes the resource cycle completely. We call this initiative PÖPELMANN blue®.

For the nonfood industry, spouts and caps can also be made from post-consumer recyclates (PCR). The recyclate comes from household waste collection. The PCR is produced from used plastic products that have already gone through a complete lifecycle.



Find out more

## EXCELLENT AND CERTIFIED.



SCIENCE  
BASED  
TARGETS

DRIVING AMBITIOUS CORPORATE CLIMATE ACTION



\*Post-Consumer-Material

## YOUR CONTACTS.



### Lea Middendorf

Key-Account-Managerin "Flexibles"  
LeaMiddendorf@poeppelemann.com  
+49 4442 982 – 4002



### Gerhard Brock

Key-Account-Manager "Packaging"  
GerhardBrock@poeppelemann.com  
+49 4442 982 – 3965



Find out more about monomaterials on our website:  
[poeppelemann.com/en/famac/sustainability/monomaterial-packaging](https://poeppelemann.com/en/famac/sustainability/monomaterial-packaging)

**WE. CREATE. FUTURE.**